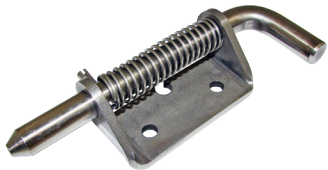


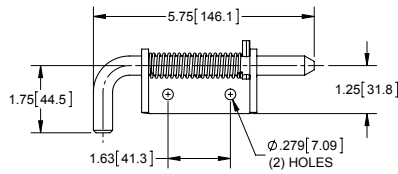
Spring Loaded Bolt Latches with Stop Pin



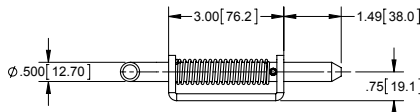
right hand



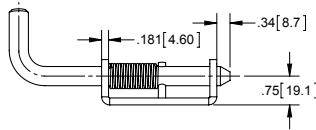
left hand



TOP VIEW



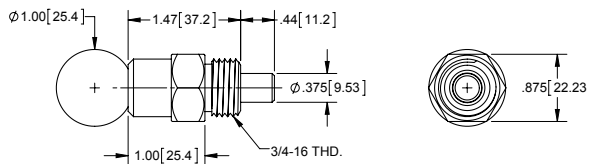
EXTENDED BOLT



RETRACTED BOLT

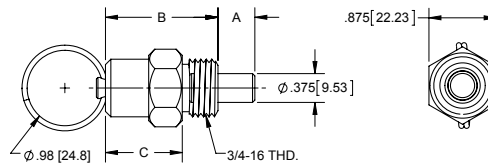
Part Number	Description	Material	Finish
1178SS-RH01	right hand	304SS	tumbled
1178SS-LH01	left hand	304SS	tumbled

Spring Loaded Pull Action .44" Pin Latch



Part Number	Material
1187-01	aluminum body, 304SS pin and plastic knob

Spring Loaded Pull Action Pin Latch



Part Number	Dim. A	Dim B	Dim. C	Material
1187	.48 [12.2]	1.47 [37.3]	1.00 [25.4]	aluminum body, 304SS pin and ring
1188	.97 [24.6]	1.47 [37.3]	1.00 [25.4]	
1189	.72 [18.3]	1.71 [43.4]	1.25 [31.8]	

Bolt Latch with Pull Ring



part no.1159 unlatched



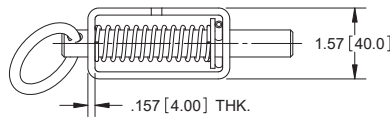
part no.1159-03 unlatched



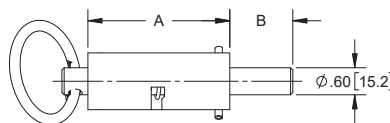
part no.1159 latched



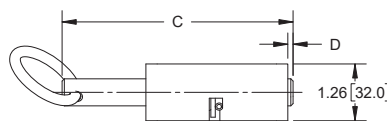
part no.1159-03 latched



TOP VIEW



FRONT VIEW LATCHED



FRONT VIEW UNLATCHED

Part Number	Dim A	Dim B	Dim C	Dim D
1159	3.15 [80.0]	1.40 [35.5]	5.13 [130.2]	.12 [3.0]
1159-03	2.00 [50.8]	.85 [21.5]	3.41 [86.5]	.20 [5.0]

- ▶ steel with zinc plated finish
- ▶ Ø.600 [15.24] steel bolt