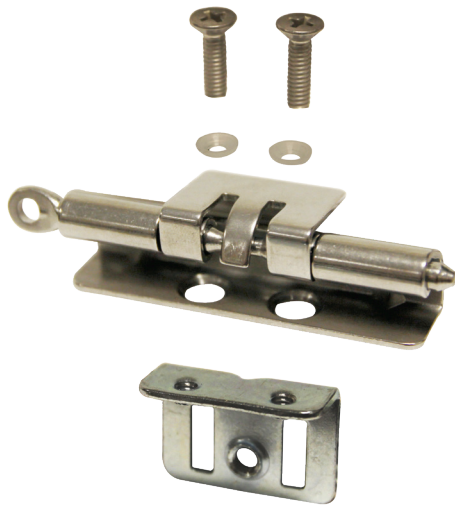


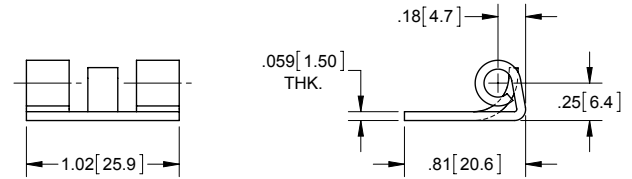
Electrical Box Hinge Assembly Kits - Quick Release Pin

NEMA & JIC

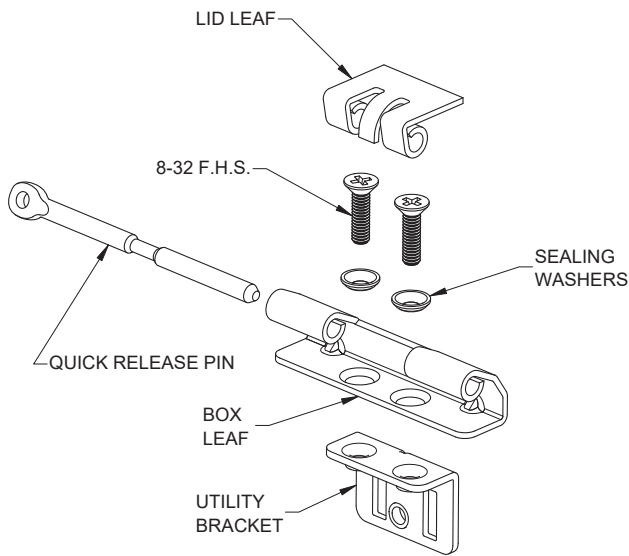


| Kit Part Number | Component Part Number | Description       | Material | Finish |
|-----------------|-----------------------|-------------------|----------|--------|
| J20885S         | X127-03               | quick release pin | 304SS    | mill   |
|                 | X1235S                | box leaf          | 304SS    | mill   |
|                 | J20735S               | lid leaf          | 304SS    | mill   |
|                 | X1245S                | 8-32 FHS          | 18-8SS   | mill   |
|                 | J2074ZN               | utility bracket   | steel    | zinc   |
|                 | P1037                 | sealing washer    | nylon    | smooth |

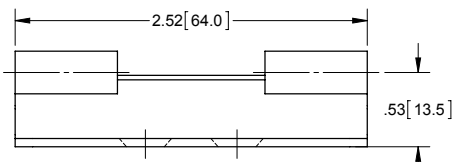
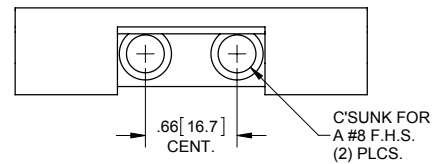
► for a proper seal between box leaf, electrical box and utility bracket, the through holes on the electrical box must be .234 [5.94] - .236 [6.00] diameter



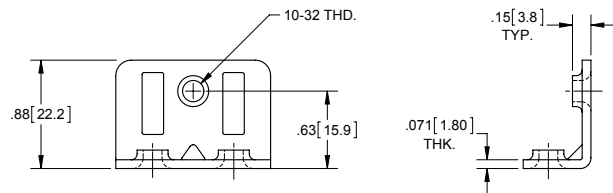
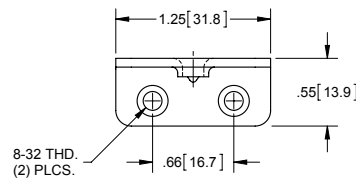
LID LEAF



EXPLODED VIEW



BOX LEAF



UTILITY BRACKET