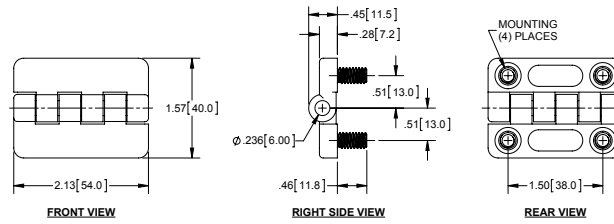


Die Cast Zinc Butt Hinge

| Part Number | Mounting | Finish |
|-----------------|-----------------------|---------------------|
| H2073-02 | 1/4-20 threaded studs | black powder coated |

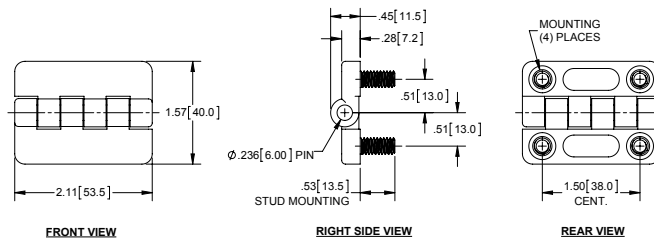
- ▶ material: die cast zinc
- ▶ steel, nickel plated threaded studs
- ▶ steel, nickel plated pin



Die Cast Zinc Butt Hinges

| Part Number | Mounting | Finish |
|-------------------|---|----------------------|
| H2081 | M6 threaded studs | black powder coated |
| H2081CH* | | bright chrome plated |
| H2081SC* | | satin chrome |
| H2081-02 | Ø6.30mm hole with Ø11.20mm x 90° c'sink | black powder coated |
| H2081CH-02 | | chrome plated |
| H2081SC-02 | | satin chrome |

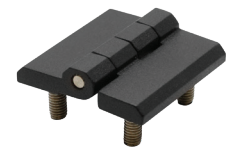
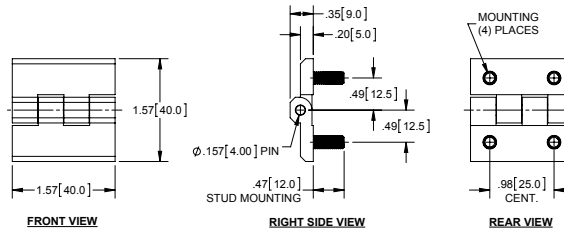
- ▶ material: die cast zinc
- ▶ stainless steel threaded studs
- ▶ stainless steel pin
- ▶ * **H2081CH** & **H2081SC** have .47 [12.0] long studs



Cast Butt Hinges

| Part Number | Mounting | Finish |
|--------------------|--|---------------------|
| H2080 | M5 threaded studs | black powder coated |
| H2080-02 | Ø5.30mm hole with Ø9.30mm x 90° c'sink | black powder coated |
| H2080SS-02* | Ø5.30mm hole with Ø9.30mm x 90° c'sink | brushed |

- ▶ material: die cast zinc
- ▶ ***H2080SS-02** comes in stainless steel
- ▶ stainless steel threaded studs
- ▶ stainless steel pin



part no. H2080



part no. H2080SS-02

Die Cast Zinc Butt Hinge

| Part Number | Material | Finish |
|--------------|---------------|---------------------|
| H2078 | die cast zinc | black powder coated |

- ▶ stainless steel, passivated pin

